



Midwest Prospect's Sioux Falls

Results

2/10/2024

Jack Hille

30 Yard Dash Times

4.32, 4.37

IF Velocity

-

OF Velocity

74-76mph

1B - Velocity

-

C - Velocity

66-68mph

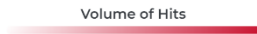
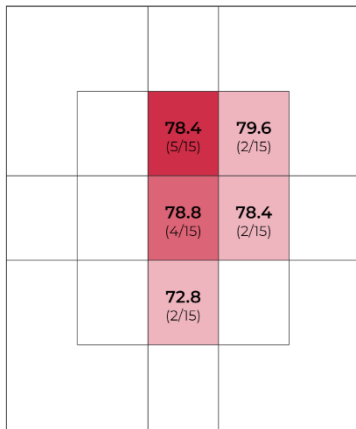
C- Pop Times

2.25, 2.34, 2.37

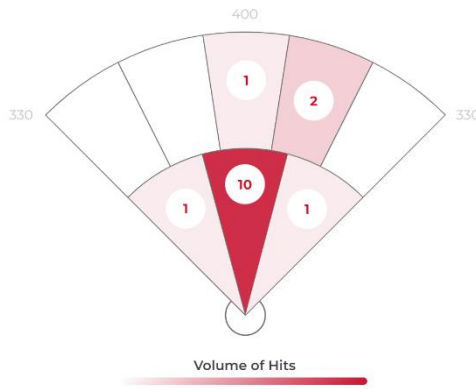
DATA

	Avg	Max	Hard Hit Avg		
Exit Velocity	77.9	81.8	78.5	Batting Avg.	0.467
Launch Angle	2.8	23.4	4.9	xwOBA	0.427
Direction	2.1°L	16.2°R	2.1°L	Slugging	0.467
Distance	78	252	100	Hard Hit %	93.3%
Spin Rate	1,853	3,022	1,770	Bombs %	6.7%
				Ropes %	20%

EXIT VELOCITY BY ZONE



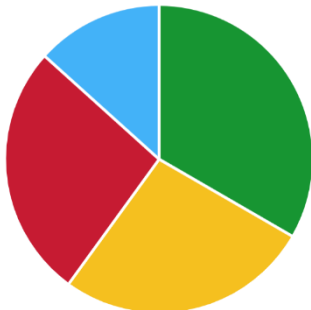
HIT VOLUME



Zone	Pull	Middle	Oppo
Volume of Hits	1/15	13/15	1/15
Avg. LA	1.0	3.0	6.0
Avg. EV	81.0	78.0	75.0
Avg. Spin	1,788	1,773	2,962
Avg. Distance	44	97	90

HIT CLASSIFICATION

- Dribbler
- Ground Ball
- Low Line Drive
- High Line Drive



HIT OUTCOMES

- Single
- Field Out

